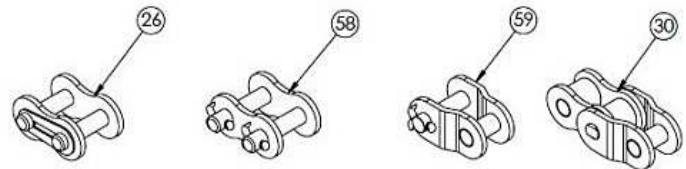
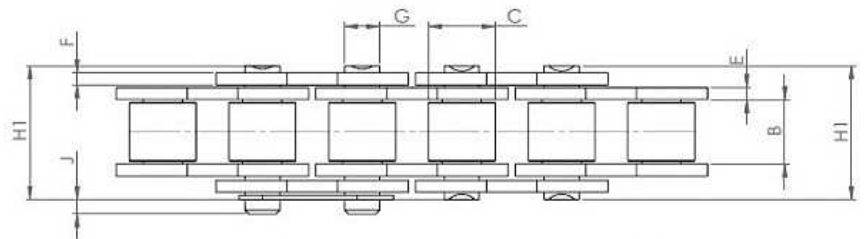
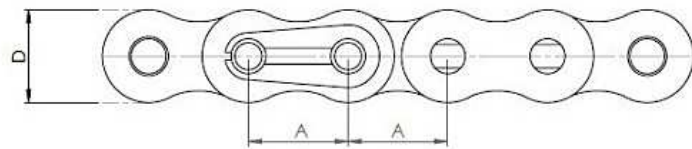


# CATENE HYDRO SERVICE SIMPLEX ISO

## CHAIN HYDRO SERVICE SIMPLEX ISO



**RENOLD**  
Superior Chain Technology



### ISO STANDARD

CHAIN CODE	REF.	A - PITCH (MM)	B - INSIDE WIDTH	C - ROLLER DIAM MIN	D - PLATE HEIGHT MAX	E - PLATE WIDTH INNER MAX	F - PLATE WIDTH OUTER MAX	G - PIN DIAM. MAX	H1 - PIN LENGTH MAX	J - CONN. LINK EXTENSION MAX	ISO606 TENSILE STRENGTH (NEWTONS) MIN	ISO606 TENSILE STRENGTH (NEWTONS) MED	WEIGHT KG/M
6906B1HY00	06B1	9.525	5.720	6.350	8.260	1.300	1.040	3.280	13.500	1.300	8900	8900	0.390
6908B1HY00	08B1	12.700	7.750	8.510	11.810	1.550	1.550	4.450	17.000	1.500	17800	17800	0.700
6910B1HY00	10B1	15.875	9.650	10.160	14.730	1.550	1.550	5.080	18.800	1.300	22200	22200	0.920
6912B1HY00	12B1	19.050	11.680	12.070	16.130	1.800	1.800	5.720	21.900	1.100	28900	28900	1.200
6916B1HY00	16B1	25.400	17.020	15.880	21.080	3.760	3.100	8.280	36.100	5.400	60000	60000	2.800
6920B1HY00	20B1	31.750	19.560	19.050	26.420	4.620	3.610	10.190	43.200	6.100	95000	95000	3.850
6924B1HY00	24B1	38.100	25.400	25.400	33.400	6.100	5.080	14.630	53.400	6.600	160000	160000	7.450



OGNIBENE S.P.A. - VIA DEL TIPOGRAFO, 6 - 40138 BOLOGNA - ITALY  
 TEL: +39 051 534225 - FAX: +39 051 535083  
[sales@ognibenechaintech.it](mailto:sales@ognibenechaintech.it) - [www.ognibenechaintech.com](http://www.ognibenechaintech.com)