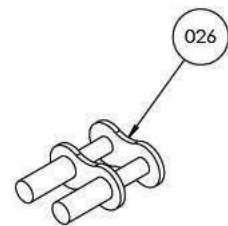
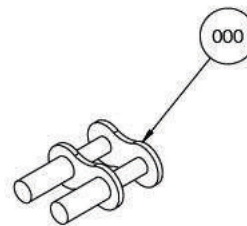
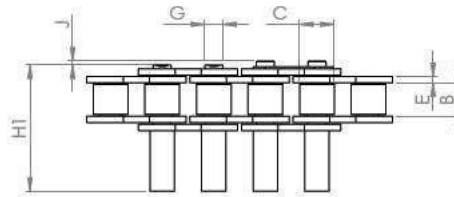
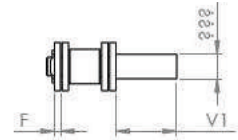
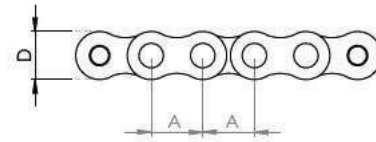
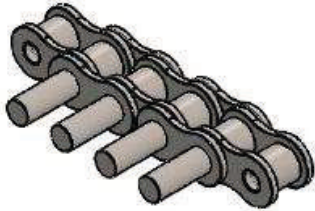


# CATENA OE CON PERNI ESTESI 1 LATO DIAM. MAGGIORATO ASA

P. SPORGENTI CON SPALLAMENTO ASA CHAIN OE WITH DOUBLE SIDE EXTENDED PINS ASA WITH INCREASED DIAMETER



## ANSI STANDARD

REF.	A - PITCH (MM)	B - INSIDE WIDTH	C - ROLLER DIAM MIN	E - PLATE WIDTH INNER MAX	F - PLATE WIDTH OUTER MAX	G - PIN DIAM. MAX	DIAM. SPALLAMENTO	V1	ISO606 TENSILE STRENGTH (NEWTONS) MIN
08A1	12.700	7.850	7.950	1.550	1.550	3.960	6	20	13900
10A1	15.875	9.400	10.160	2.040	2.040	5.080	8	20	21800
12A1	19.050	12.700	11.910	2.450	2.450	5.940	8	25	31300
16A1	25.400	15.750	15.880	3.250	3.250	7.920	10	30	55600



OGNIBENE S.P.A. - VIA DEL TIPOGRAFO, 6 - 40138 BOLOGNA - ITALY  
 TEL: +39 051 534225 - FAX: +39 051 535083  
[sales@ognibenechaintech.it](mailto:sales@ognibenechaintech.it) - [www.ognibenechaintech.com](http://www.ognibenechaintech.com)