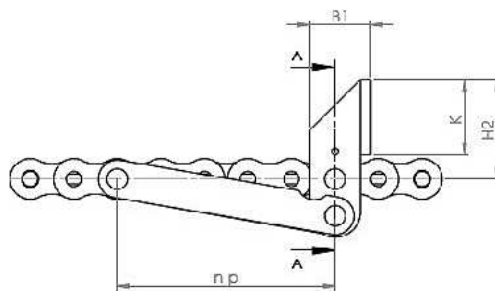
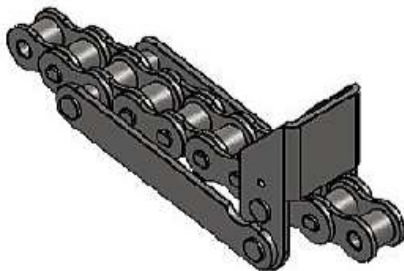
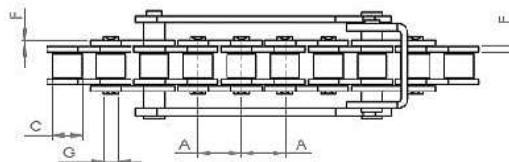
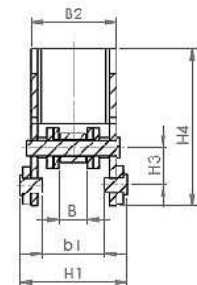


# SPINTORI STANDARD OE A DOPPIA SPINTA

## OE PUCHER DOG STANDARD



SEZIONE A-A



### ISO STANDARD

CHAIN CODE	REF. Z	PITCH (MM)	INSIDE WIDTH	ROLLER DIAM MIN	PLATE WIDTH INNER MAX	PLATE WIDTH OUTER MAX	PIN DIAM. MAX	LENGTH MAX						ISO606 TENSILE STRENGTH (NEWTONS) MIN	WEIGHT KG/M
		A	B	C	E	F	G	H1	B1	B2	H2	H4	K		
-	06-B1 Z40	9,525	5,720	6,350	1,290	1,040	3,280	30	14	22	25	40	16	8900	0,390
-	08-B1 Z20	12,700	7,750	8,510	1,550	1,550	4,450	35	18	25	29	46	22	17800	0,700
-	10-B1 Z24	15,875	9,650	10,160	1,550	1,550	5,080	40	18	31	60	86	50	22200	0,960
-	10-B1 Z32	15,875	9,650	10,160	1,550	1,550	5,080	40	18	31	60	82	50	22200	0,960
-	16-B1 Z24	25,400	17,020	15,880	4,120	3,100	8,280	65	25	46	80	113	68	60000	2,800



OGNIBENE S.P.A. - VIA DEL TIPOGRAFO, 6 - 40138 BOLOGNA - ITALY  
 TEL: +39 051 534225 - FAX: +39 051 535083  
[sales@ognibenechaintech.it](mailto:sales@ognibenechaintech.it) - [www.ognibenechaintech.com](http://www.ognibenechaintech.com)