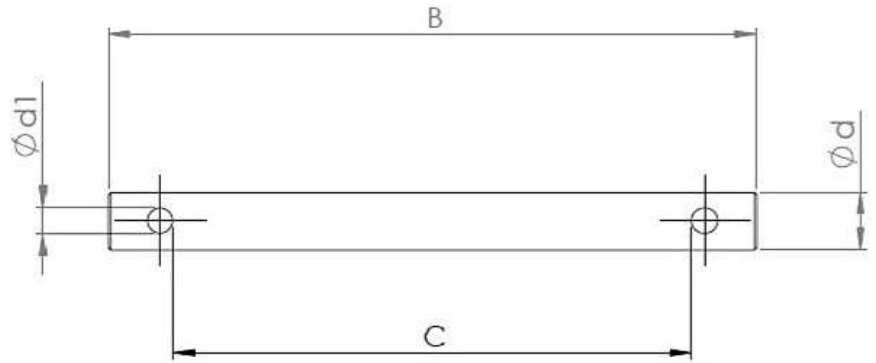


PERNI DIAM 5.08 - 5.72 CON 2 FORI COPPIGLIA CATENE

FLYER

Catene fleyer

Dove sei: [Homepage](#) > [Industria](#)



ISO STANDARD					
COD.	B	C	D	D. EFFETTIVO	DIAMETRO FORO
-	14.5	7.9	5.08	4.98	1.6
-	16.5	9.9	5.08	4.98	1.6
527051011	17.7	11.1	5.08	4.98	1.6
527051014	20.6	14	5.08	4.98	1.6
527051015	21.9	15.3	5.08	4.98	1.6
527051016	22.6	16	5.08	4.98	1.6
527051017	23.4	16.5	5.08	4.98	1.6
-	24.6	18	5.08	4.98	1.6
527051020	27.6	20.6	5.08	4.98	1.6
527051021	28	21.4	5.08	4.98	1.6
-	28.7	22.1	5.08	4.98	1.6
527051024	30.5	23.9	5.08	4.98	1.6
-	32.6	26	5.08	4.98	1.6
527051027	34.1	27.1	5.08	4.98	1.6
527051030	37.1	30.5	5.08	4.98	1.6
527051032	38.5	31.9	5.08	4.98	1.6
527051040	46.4	39.8	5.08	4.98	1.6
-	16.6	9.5	5.72	5.60	2.1
-	18.9	11.8	5.72	5.60	2.1
-	23.5	16.4	5.72	5.60	2.1
527057019	25.9	18.8	5.72	5.60	2.1
527057021	28.2	21.1	5.72	5.60	2.1
-	33.1	26	5.72	5.60	2.1
527057028	35.1	28	5.72	5.60	2.1
527057030	30.5	25.5	5.72	5.60	2.1
527057031	38	30.9	5.72	5.60	2.1
527057037	44.6	37.5	5.72	5.60	2.1
527057045	51.7	44.6	5.72	5.60	2.1
527057047	53.9	46.8	5.72	5.60	2.1