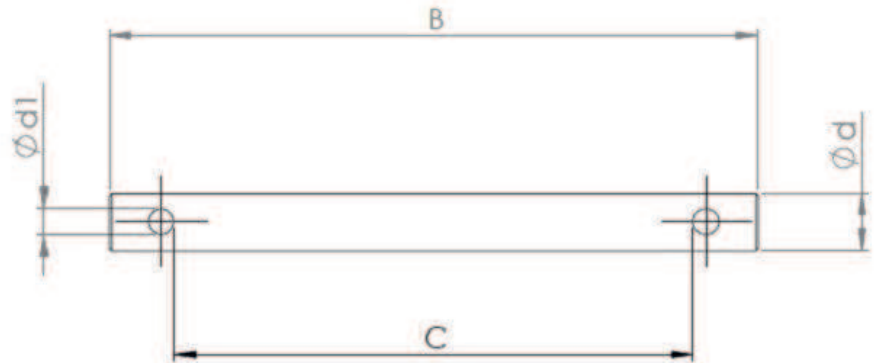


# PERNI DIAM 3.28 - 4.45 CON 2 FORI COPPIGLIA CATENE

## FLYER

Catene fleyer

Dove sei: [Homepage](#) > [Industria](#)



### ISO STANDARD

COD.	B	C	D	D. EFFETTIVO	DIAMETRO FORO
527033004	92	45	3.28	3.15	1.1
-	103	56	3.28	3.15	1.1
527033008	124	77	3.28	3.15	1.1
527033009	133	86	3.28	3.15	1.1
527033011	145	98	3.28	3.15	1.1
-	167	12	3.28	3.15	1.1
527033013	177	13	3.28	3.15	1.1
527036017	23.1	17.1	3.58	3.56	1.3
527036024	30.4	24.4	3.58	3.56	2.5
527036030	35.6	29.6	3.58	3.56	2.5
527040011	175	11.5	3.97	3.87	2.5
527040020	25	20	3.97	3.87	2.5
527044007	12.7	7.1	4.45	4.35	1.6
-	14.5	8.9	4.45	4.35	1.6
-	17.8	12.2	4.45	4.35	1.6
507044014	19.8	14.2	4.45	4.35	1.6
507044016	21.3	15.7	4.45	4.35	1.6
527044017	22.7	17.1	4.45	4.35	1.6
-	24.9	19.3	4.45	4.35	1.6
527044021	26.6	21	4.45	4.35	1.6
527044024	30.4	24.8	4.45	4.35	1.6
527044026	32	26.4	4.45	4.35	1.6
527044028	33.7	28.1	4.45	4.35	1.6
527044030	35.2	29.6	4.45	4.35	1.6
-	39.3	33.7	4.45	4.35	1.6
527044035	40.7	35.1	4.45	4.35	1.6